



30 Park Street, Mumbles, Swansea, SA3 4DA

Two Bedrooms
Two Bathrooms
West Facing Garden

FREEHOLD

733 sqft

OFFERS IN THE REGION OF

£325,000

A stylish village cottage with a sunny garden and everything Mumbles has to offer on your doorstep.





A fabulous refurbished cottage in the very heart of Mumbles, offering smart, contemporary living with the rare advantage of a west-facing garden.









Set along one of Mumbles' most convenient streets, this attractive two-bedroom terraced cottage has been thoughtfully and comprehensively refurbished to create a home of clean lines, natural light and modern comfort.

The accommodation, extending to approximately 733 sqft, is well arranged and notably practical. The ground floor offers a generous open-plan living space, where the sitting room flows seamlessly into a contemporary kitchen, creating a sociable and inviting environment suited to both everyday living and entertaining. The finish throughout is crisp and understated, with a cohesive design that enhances the sense of space.

A modern bathroom is positioned on the ground floor, adding flexibility, while upstairs the property provides two well-proportioned bedrooms. The principal bedroom benefits from a stylish ensuite shower room, giving the house a level of convenience rarely found in cottages of this style.

Externally, the rear garden is a particularly appealing feature—of good size and enjoying a desirable west-facing aspect, it captures the afternoon and evening sun, making it an ideal setting for relaxing or dining outdoors.

The property is offered to the market with no onward chain, making it an attractive and straightforward purchase.









Tenure: Freehold

Services: All mains services connected
(electricity, water, sewerage, gas
central heating)

Council Tax Band: D (approx. £2,100 p.a.)

EPC Rating: (to be confirmed)



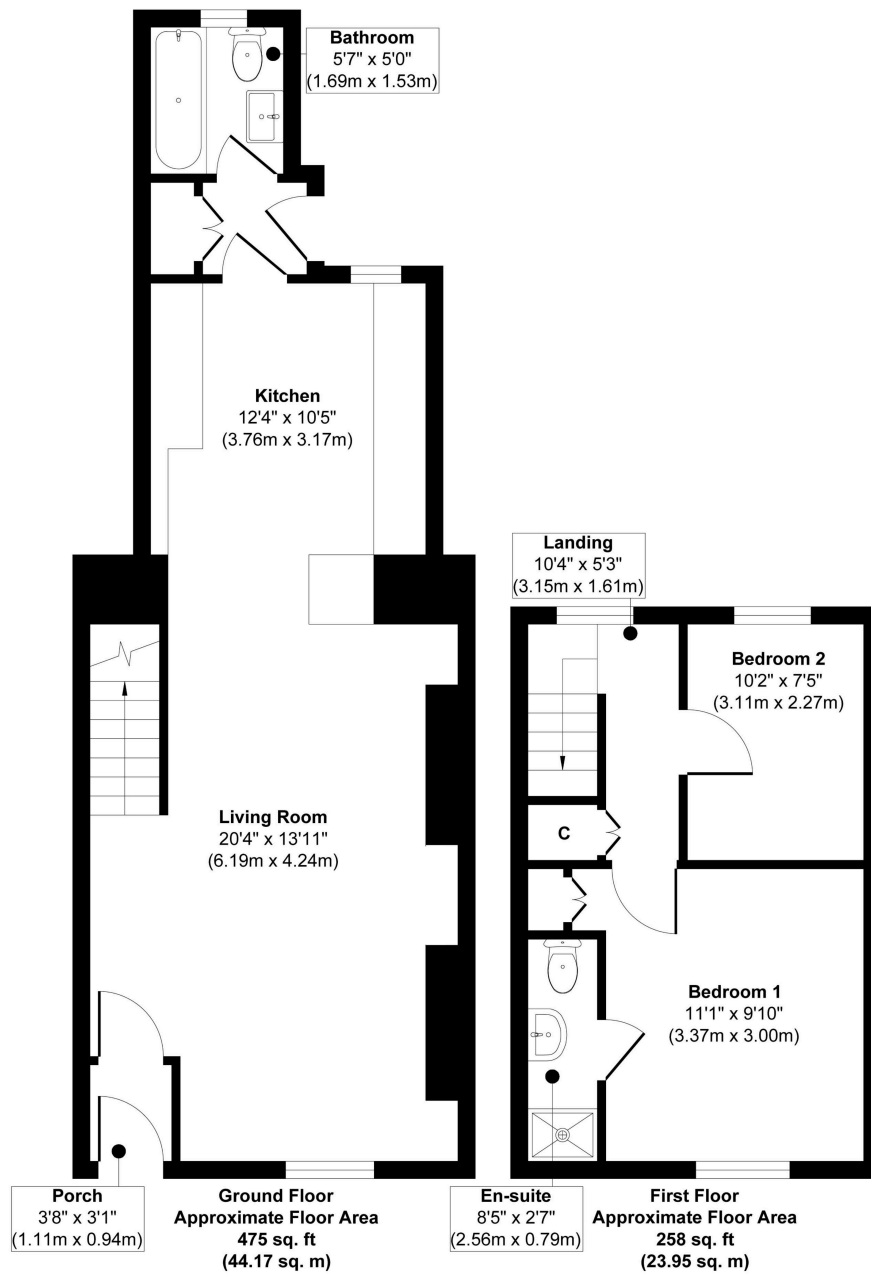


Illustration for identification purposes only, measurements are approximate, not to scale.

Produced by Elements Property

The Location

Park Street sits in the very centre of Mumbles Village, one of Swansea's most sought-after coastal locations, known for its vibrant yet relaxed lifestyle.

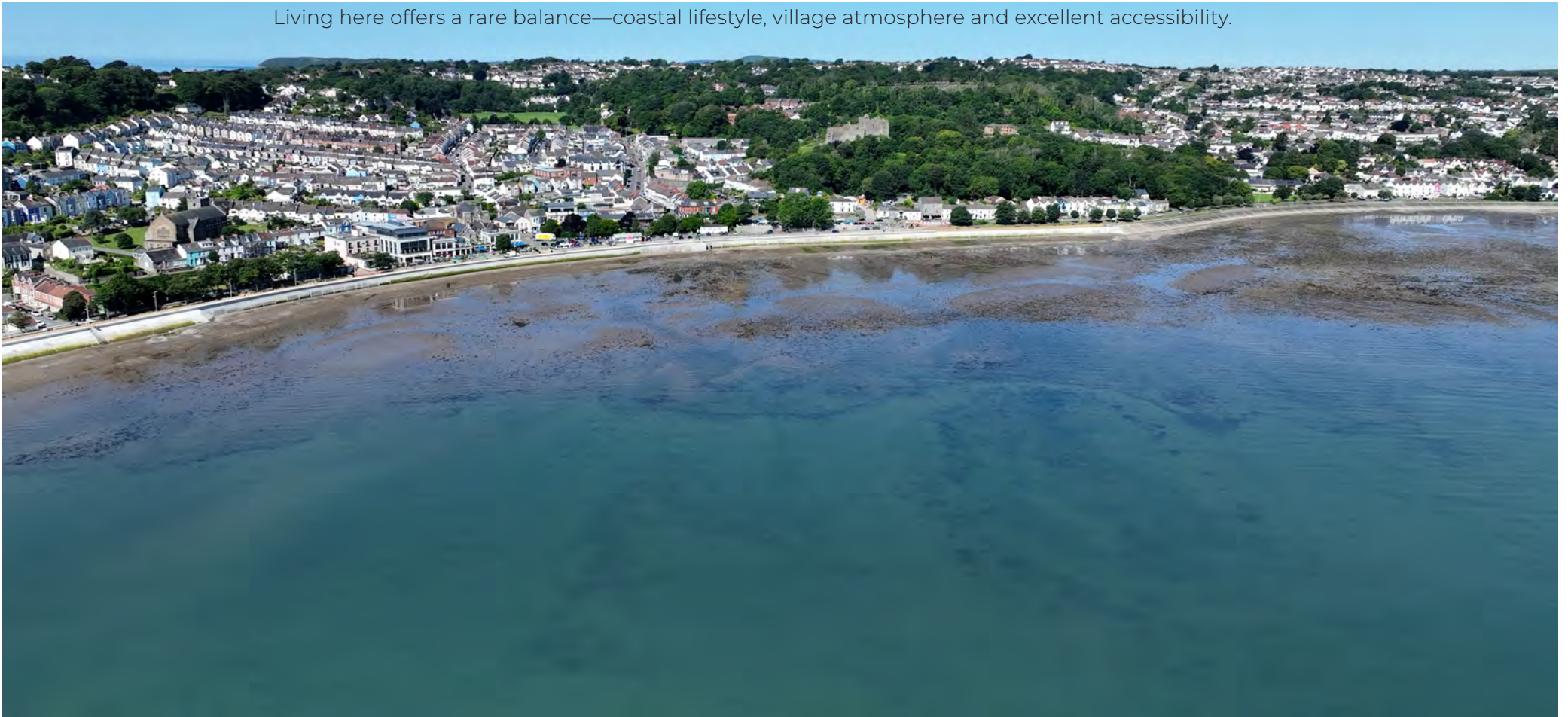
Within a short walk (approximately 200–400 metres), you will find an excellent selection of independent boutiques, cafés, bars and restaurants, along with the popular Oyster Wharf development, offering waterside dining and social spaces. The seafront promenade is also close by, providing miles of coastal walking and cycling with views across Swansea Bay.

For those who enjoy the outdoors, Llangland Bay is approximately 1 mile away, with Caswell Bay slightly further, both offering sandy beaches and access to the wider Gower Peninsula, the UK's first Area of Outstanding Natural Beauty.

Everyday amenities are easily accessible, including convenience stores, supermarkets and local services. Swansea City Centre is approximately 4.5 miles away, while the M4 motorway (Junction 47) can be reached within around 15–20 minutes by car, offering good connectivity for commuting.

The property falls within the catchment for well-regarded local schools, including Oystermouth Primary School and Bishop Gore Comprehensive School, both highly regarded in the area.

Living here offers a rare balance—coastal lifestyle, village atmosphere and excellent accessibility.





THE
GREENROOM
ESTATE AGENCY

Telephone

01792 986099

Address

29-30 Dunns Lane
Mumbles
SA3 4AA

E-mail and Web

info@thegreenroomhomes.com
www.thegreenroomhomes.com.com